

Many thanks to our team

Coaches

Guillaume Blum

Marie Lucy Stojak

Patrick Cohendet

Laureline Chiapello

Barbara Decelle

Teammates

Piers Duplock

Henri Guay

Mahassine Laghzioui

Andrian Acevedo

Miyuki Davila Nagam

Mathieu Roy Paré



PECHA KUCHA

Space data

400 secondes





Space data \neq Data of Space



Late to the party



Case study

Fast Platform 

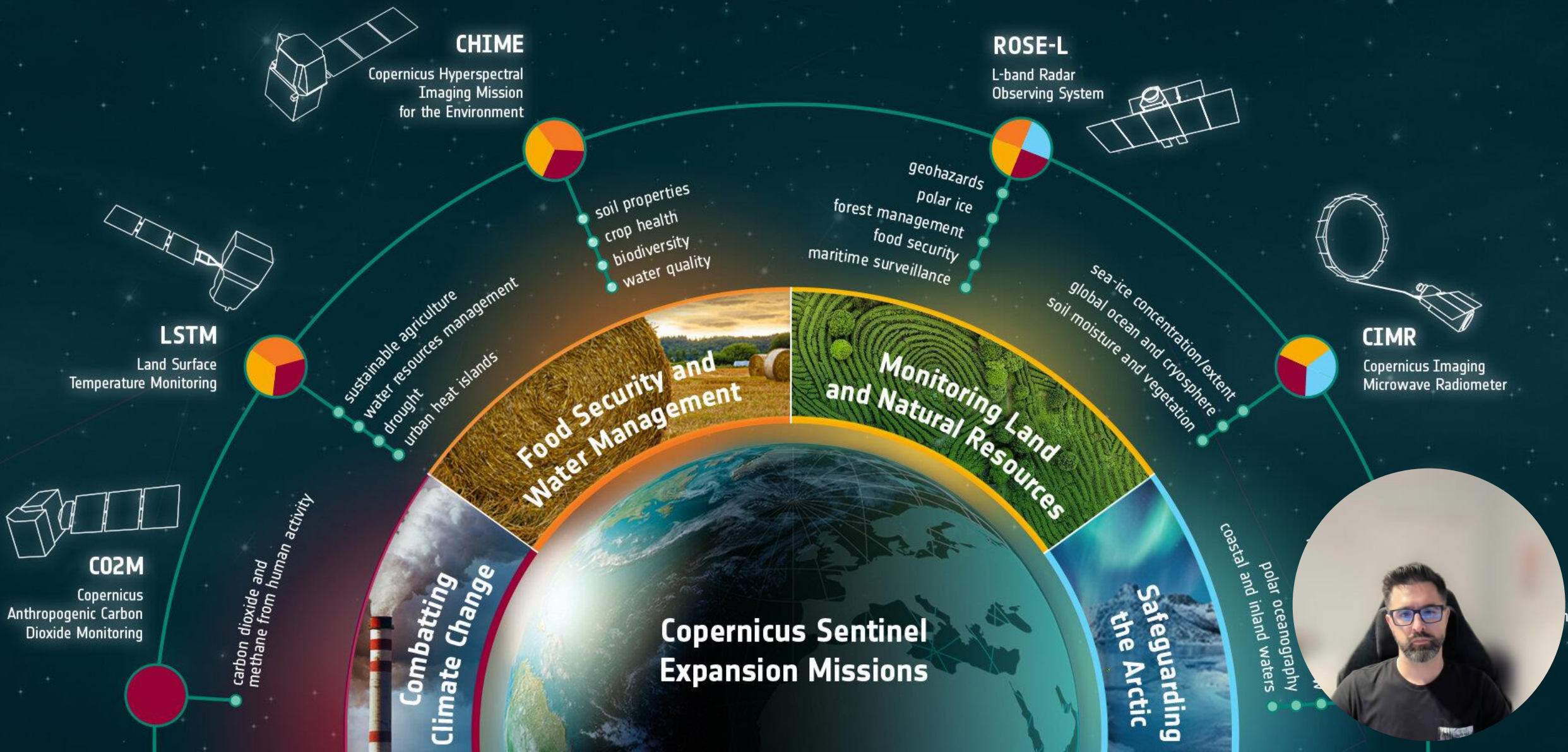




PROGRAMME OF THE
EUROPEAN UNION



co-funded with





DATA
TERRA

KNOW US

NEWS

DATA &
SERVICES

ACTIVITIES

RESOURCES &
MEDIA



EN
▼

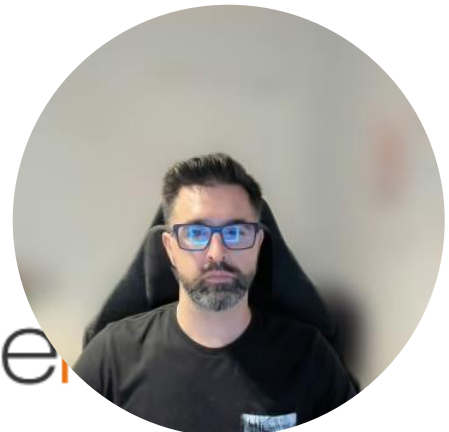
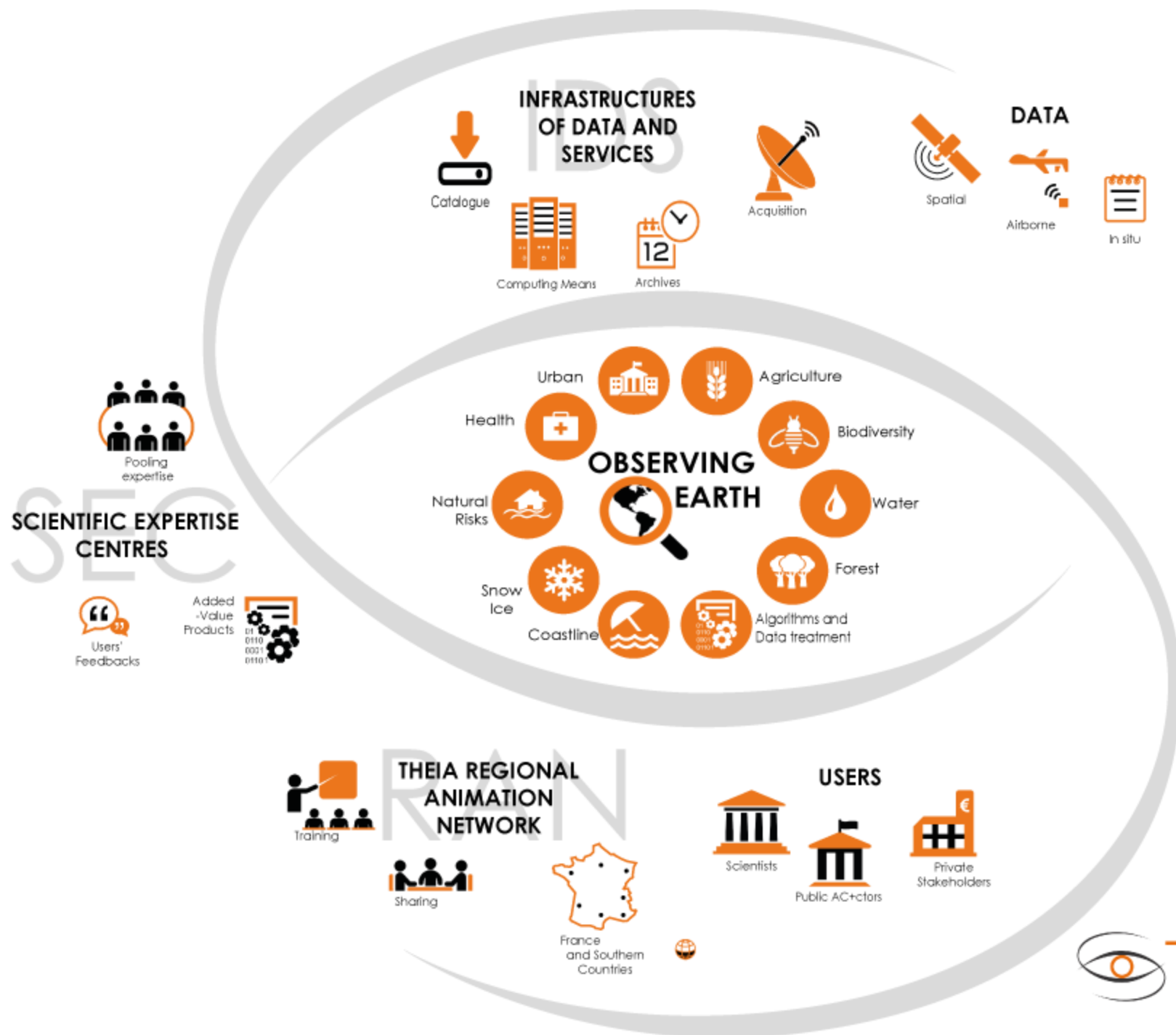
INTEGRATED EARTH SYSTEM OBSERVATION

A RESEARCH INFRASTRUCTURE TO ACCESS, PROCESS AND COMBINE MULTI-SOURCE DATA

A NATIONAL RESEARCH CENTER
EARTH SYSTEM &
ENVIRONMENT

QUICK ACCESS TO DATA







Canada's spatial data infrastructure (SDI), referred to as the [Canadian Geospatial Data Infrastructure \(CGDI\)](#) is the relevant base collection of standards, policies, applications, and governance that facilitate the access, use, integration, and preservation of spatial data.

GeoConnections is a national program with the mandate and responsibility to lead the **CGDI** through the use of [standards-based technologies and operational policies](#) for data sharing and integration.

Find out more
Geospatial Communities in Canada and the Canadian GeoSecretariat
Get to know the Federal Geospatial Platform (FGP)
Visit our Satellite Facilities
Learn about Geospatial Standards and Operational Policies
Drop by the CGDI Resource Centre
Go visit the Arctic SDI
Learn about the Canadian Geomatics Study
Look at funded projects
Take me to data on open.canada.ca
Link to a list of harvested CGDI geospatial web services

Announcements
Canadian Geospatial Data Infrastructure (CGDI) User Needs Assessments
A User Needs Assessment (UNA) and User-centered Design (UCD) study has been completed to assess the capacity

[Canada.ca](#) > [Canadian Space Agency](#) > [Funding programs and opportunities](#) > [Programs](#)

smartEarth

Initiative description; funding opportunities; contributions, grants and contracts awarded; frequently asked questions.



Topics

About smartEarth

Objectives, eligibility, funding opportunities and contact information.

Funding opportunities

Contracts, contributions and grants available.

Contributions, grants and contracts awarded

Opportunities issued and summary of selected projects.

Frequently asked questions

The three program tracks, former programs, satellite data uses.

Videos

Companies that use satellite data.

[Français](#)



MENU

Fullscreen

[Canada.ca](#) > [Natural Resources Canada](#) > [Maps, Tools and Publications](#) > [Satellite imagery and air photos](#)

Start

Welcome to the EODMS (Earth Observation Data Management System)

Data

Search

[Download Emergency Flood Maps](#)

[NOAA/METOP AVHRR](#)

Account

[Register \(for Download\)](#)

[Login](#)

Trending

[eodms-cli \(GitHub\)](#)

[Sentinel NRT Canada Mirror](#)

[NMSO Commercial Satellite Imagery](#)

[RADARSAT-1 COGs on AWS](#)

[RCM Vetted Access](#)

Map Options

CGDI Resource Centre

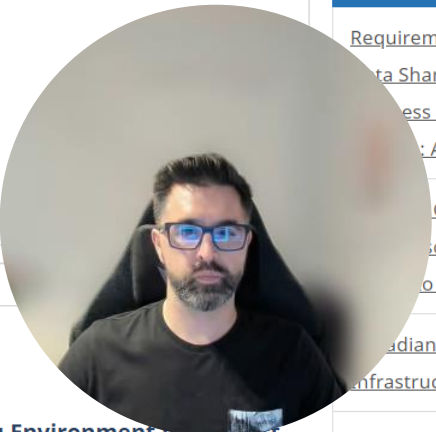
- [CGDI Foundation](#)
- [Operational Policies](#)
- [Access, Management and Dissemination](#)
- [Capacity Building Resources](#)
- [Protected Information](#)
- [Geomatics Environment](#)
- [Geospatial Web Services](#)

Filter

Showing 63 filtered from 63 total entries

CGDI Foundation

[Requirements for an Open Forestry Data Sharing Environment to Support](#)



Federal Geospatial Platform

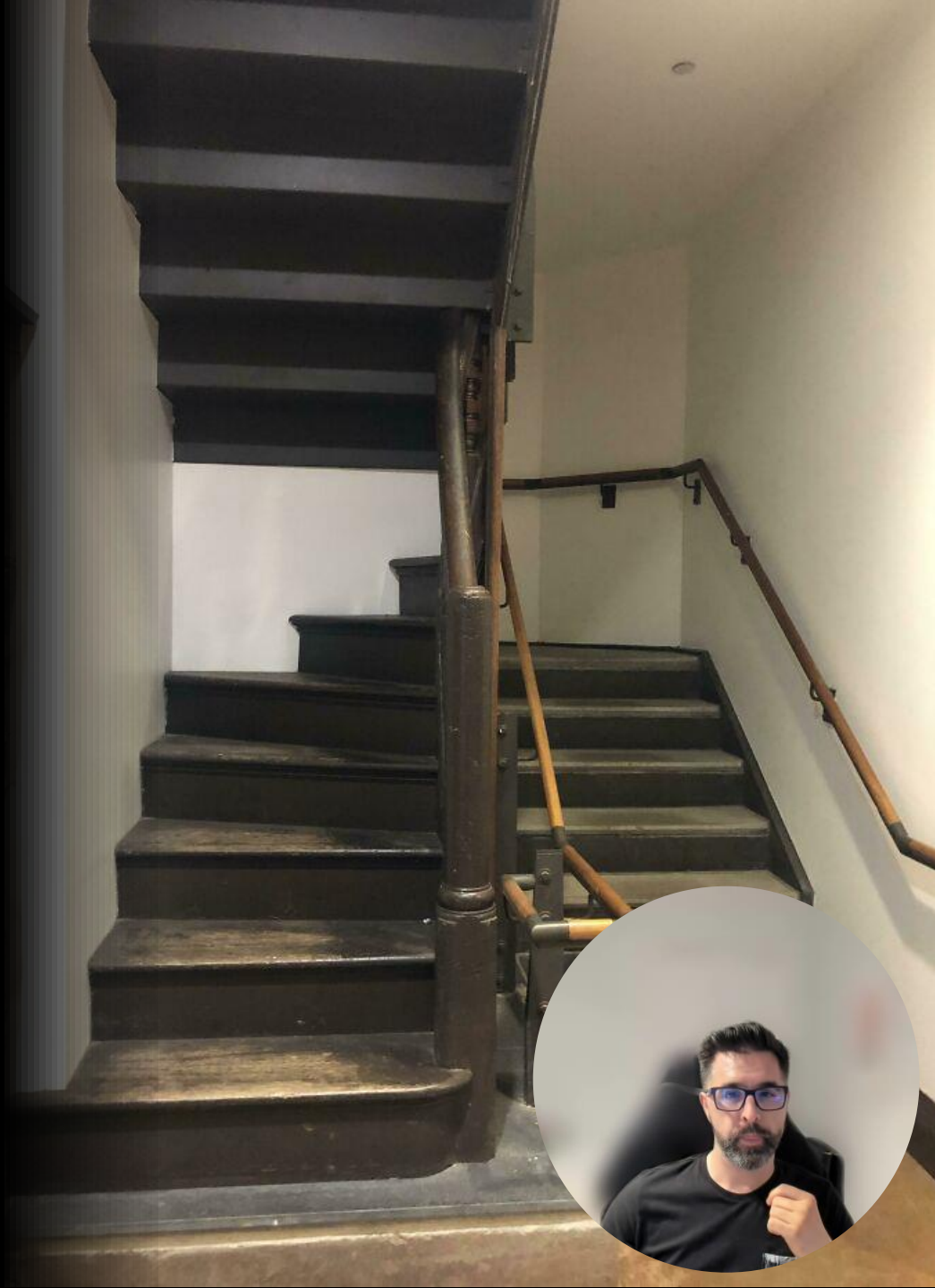
ederal Geospatial Platform (FGP) is an initiative of **erations (FCGEO)**, a committee of senior executives of departments of geospatial data, or have an interest in active in the geospatial community recognized an opportunity for federal geospatial data in a more efficient and coordinated way by using a geospatial platform and governance.

The FGP will be a collaborative online environment consisting of a shared infrastructure that will enable the government to collect, store, and displayed in a visual context to enhance decision-making.

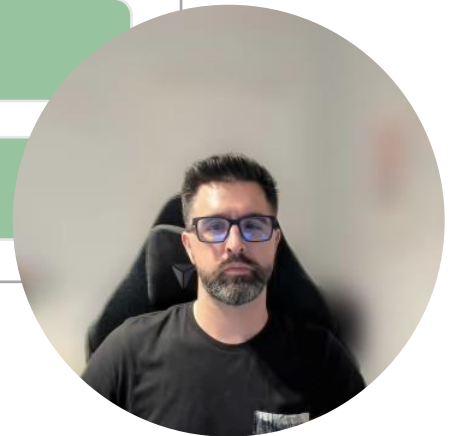
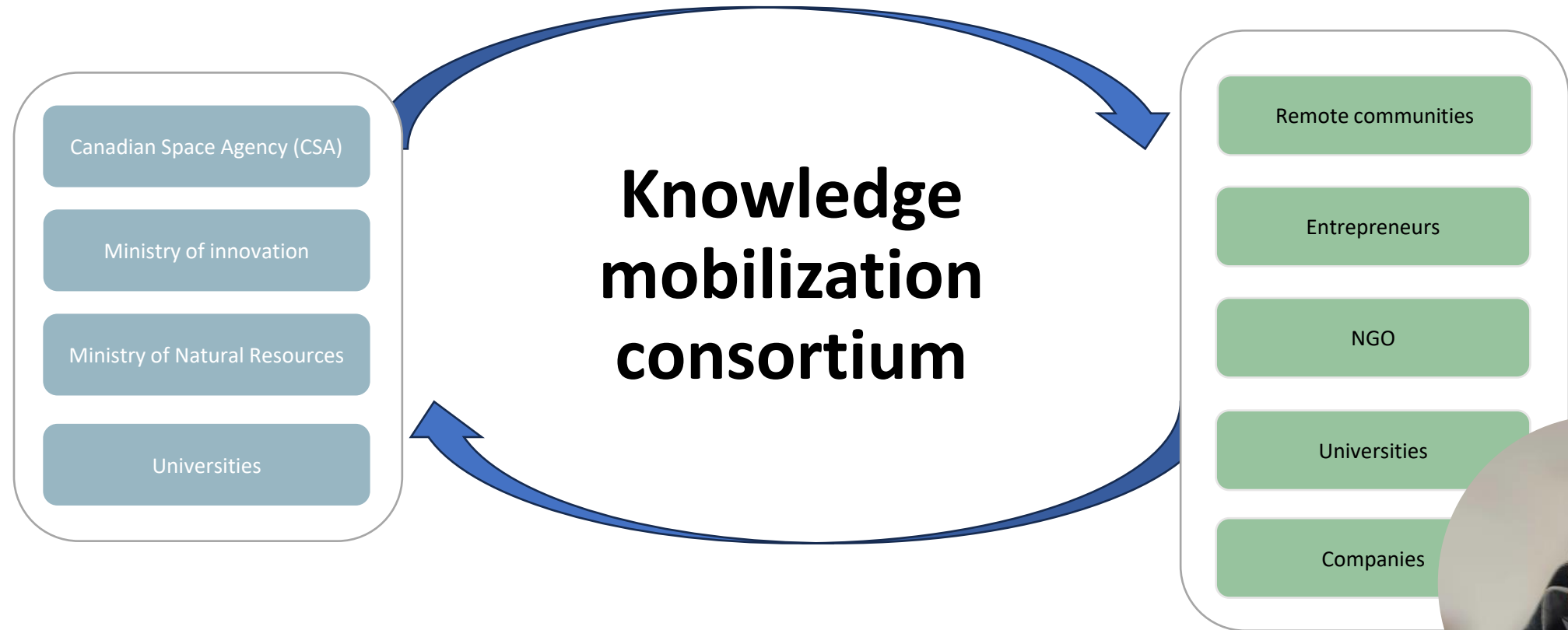
Geospatial data - data that has a reference to a geographic location. The platform to support many objectives such as economic development, environmental departments and agencies collect and manage large amounts of data made within these organizations. Sometimes data are not shared between departments, or, due to a variety of reasons, data are not shared. The use of spatially-related data and tools is rapidly increasing.

The FGP initiative, an example of innovation and renewal, will help the government to manage geospatial data assets more effectively while supporting the digital economy.

Accessibility



Our proposal





IVADO



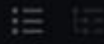
Consultation





Education





Assets (1)

+ Add Data

New dataset >

2,166 rows

Layers

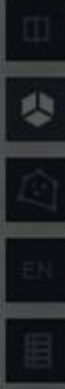
+ Add Layer

NYC 2010 Census Tra...

Geolion

Blending

Normal



Usability



Libraries - API



Alliances



A close-up, low-angle shot of a runner's legs in motion on a blue track. The runner is wearing blue and orange sneakers. The word "Acceleration" is overlaid in white text in the center of the image.

Acceleration





Thank you all

